

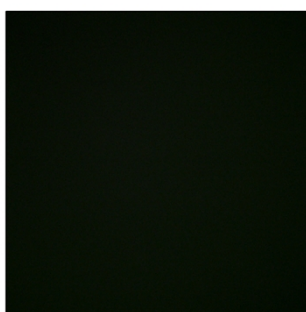
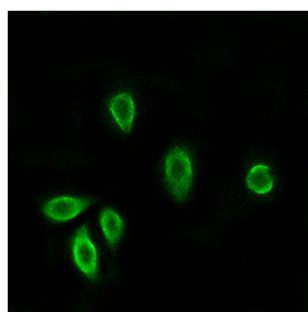


# TRH-R1 Polyclonal Antibody

<b>Catalog No</b>	YP-Ab-12829
<b>Isotype</b>	IgG
<b>Reactivity</b>	Human;Mouse;Rat;Monkey
<b>Applications</b>	WB;IF;ELISA
<b>Gene Name</b>	TRHR
<b>Protein Name</b>	Thyrotropin-releasing hormone receptor
<b>Immunogen</b>	The antiserum was produced against synthesized peptide derived from human TRHR. AA range:195-244
<b>Specificity</b>	TRH-R1 Polyclonal Antibody detects endogenous levels of TRH-R1 protein.
<b>Formulation</b>	Liquid in PBS containing 50% glycerol, 0.5% BSA and 0.02% sodium azide.
<b>Source</b>	Polyclonal, Rabbit,IgG
<b>Purification</b>	The antibody was affinity-purified from rabbit antiserum by affinity-chromatography using epitope-specific immunogen.
<b>Dilution</b>	Western Blot: 1/500 - 1/2000. Immunofluorescence: 1/200 - 1/1000. ELISA: 1/20000. Not yet tested in other applications.
<b>Concentration</b>	1 mg/ml
<b>Purity</b>	≥90%
<b>Storage Stability</b>	-20°C/1 year
<b>Synonyms</b>	TRHR; Thyrotropin-releasing hormone receptor; TRH-R; Thyroliberin receptor
<b>Observed Band</b>	50kD
<b>Cell Pathway</b>	Cell membrane ; Multi-pass membrane protein .
<b>Tissue Specificity</b>	Brain,Pituitary,Placenta,
<b>Function</b>	function:Receptor for thyrotropin-releasing hormone. This receptor is mediated by G proteins which activate a phosphatidylinositol-calcium second messenger system.,similarity:Belongs to the G-protein coupled receptor 1 family.,
<b>Background</b>	This gene encodes a G protein-coupled receptor for thyrotropin-releasing hormone (TRH). Upon binding to TRH, this receptor activates the inositol phospholipid-calcium-protein kinase C transduction pathway. Mutations in this gene have been associated with generalized thyrotropin-releasing hormone resistance. [provided by RefSeq, Sep 2011],
<b>matters needing attention</b>	Avoid repeated freezing and thawing!

**Usage suggestions**

This product can be used in immunological reaction related experiments. For more information, please consult technical personnel.

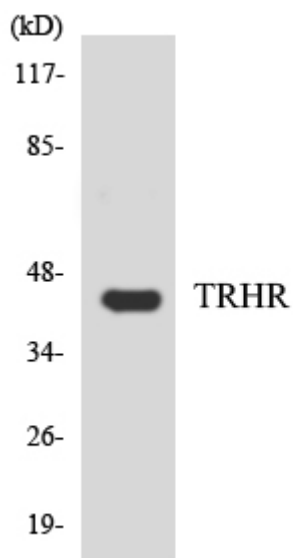
**Products Images**

Immunofluorescence analysis of A549 cells, using TRHR Antibody. The picture on the right is blocked with the synthesized peptide.



Western blot analysis of lysates from COS7 cells, using TRHR Antibody. The lane on the right is blocked with the synthesized peptide.

TRHR --



Western blot analysis of the lysates from HepG2 cells using TRHR antibody.